

APPLICAZIONI

Elettropompe universali per applicazioni civili ed industriali, per impianti di lavaggio ad alta pressione, per l'irrigazione, l'agricoltura, impianti sportivi, per fontane e per movimentazione di liquidi moderatamente aggressivi privi di sostanze solide o abrasive.

APPLICATION

Universal pumps for domestic or municipal water supply systems, for clean non-explosive liquids without solid or abrasive substances, for agricultural irrigation and sports application, for civil and industrial use, boiler feeding and condensate systems and for high pressure washing plants.

LIMITI D'IMPIEGO

- Temperatura liquido da 0°C a 110°C (max)
- Temperatura ambiente fino a 40° C
- Pressione max. d'esercizio 25 bar

OPERATING CONDITIONS

- Temperature of liquid from 0°C to 110°C (max)
- Ambient temperature max to 40°C
- Max. working pressure 25 bar

MOTORE

- Motore elettrico ad induzione a (n = 2900 min⁻¹) IM V1 (IEC 34-7)
- Isolamento Classe F
- Protezione IP 55

MOTOR

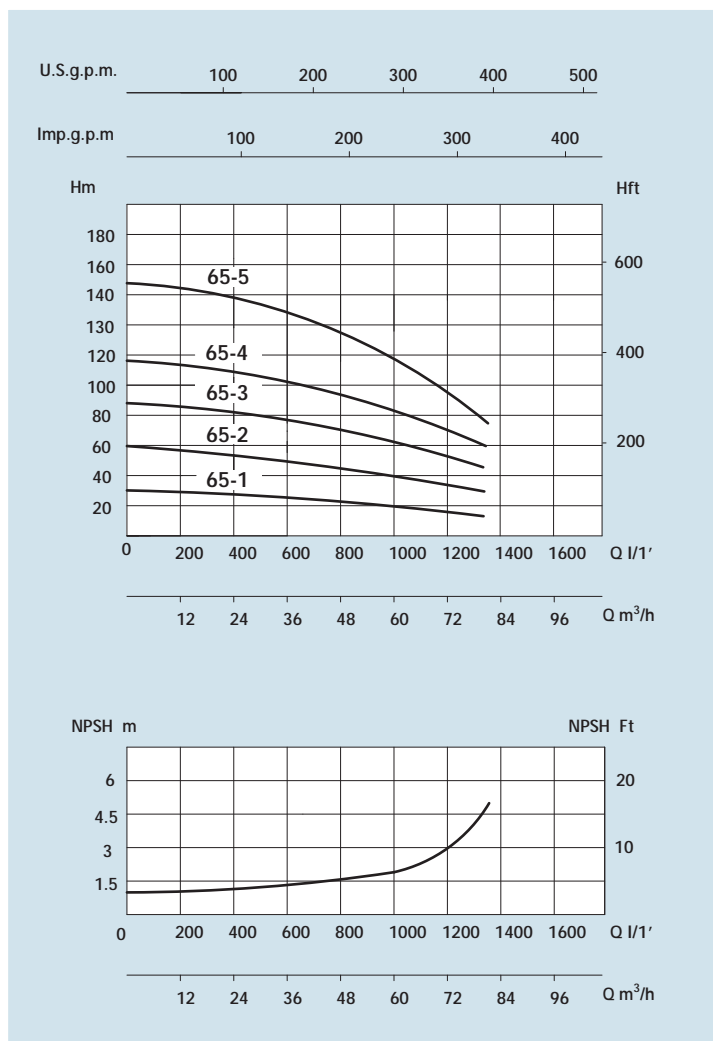
- Electric standard motor (n = 2900 min⁻¹) IM V1 (IEC 34-7)
- Insulation Class F
- Protection IP 55

MATERIALI

- Corpo aspirazione Acciaio Aisi 304
- Corpo mandata Acciaio Aisi 304
- Girante Acciaio Aisi 304
- Camicia pompa Acciaio Aisi 304
- Controflange Acciaio Aisi 304
- Coperchio superiore Acciaio Aisi 304
- Coperchio inferiore Acciaio Aisi 304
- Albero motore Acciaio Aisi 303
- Tenute meccaniche Grafite/Silicio

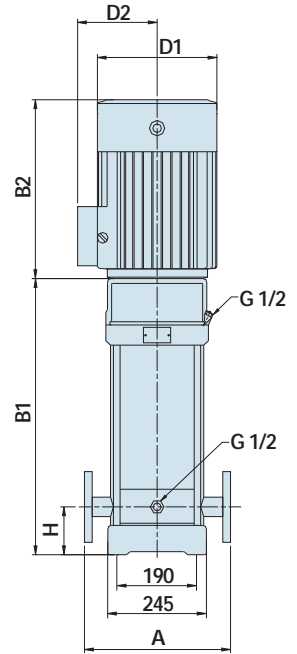
MATERIALS

- Suction casing Stainless Steel Aisi 304
- Delivery casing Stainless Steel Aisi 304
- Impeller Stainless Steel Aisi 304
- External jacket Stainless Steel Aisi 304
- Counterflanges Stainless Steel Aisi 304
- Upper cover Stainless Steel Aisi 304
- Lower cover Stainless Steel Aisi 304
- Pump shaft Stainless Steel Aisi 303
- Mechanical seal Silicon/Graphite

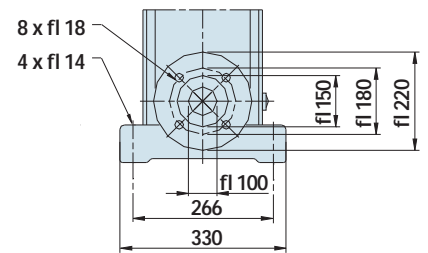


DATI TECNICI - TECHNICAL DATA

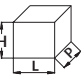
TIPO - TYPE	POTENZA NOMINALE NOMINAL POWER P2		AMPERE Trifase Three-phase	Q = PORTATA - CAPACITY								
	HP	KW		3 x 400V	m³/h	30	40	50	60	65	70	80
Trifase Three-phase				500	666	832	1000	1083	1166	1333		
230/400V-50Hz				Prevalenza manometrica totale in m.C.A. - Total head in meters w.c.								
VS 65-1	7,5	5,5	10,3		27	25	23	21	20	18	15	
VS 65-2	15	11	20		53	51	47	43	40	37	30	
VS 65-3	25	18,5	32,2		80	76	70	64	60	55	46	
VS 65-4	30	22	39,7		107	101	94	85	80	74	61	
VS 65-5	40	30	53,7		136	129	119	109	102	94	78	



DN 100 4



DIMENSIONI E PESI - DIMENSIONS AND WEIGHTS

TIPO - TYPE	DIMENSIONI mm - DIMENSIONS mm								DIMENSIONI DIMENSIONS mm 			Peso Weight Kg
	A	H	B1	B2	B1 + B2	D1	D2	Flangia Flange	P	L	H	
Trifase Three-phase												
VS 65-1	365	140	561	430	991	260	208	DN 100 4	500	1100	400	110
VS 65-2	365	140	754	490	1244	330	255	DN 100 4	500	1280	400	155
VS 65-3	365	140	836	550	1386	330	255	DN 100 4	500	1420	400	205
VS 65-4	365	140	919	590	1509	360	285	DN 100 4	500	1550	400	260
VS 65-5	365	140	1001	660	1661	400	310	DN 100 4	500	1700	400	345